

Inspection Report (<input checked="" type="checkbox"/> 1 ST <input type="checkbox"/> 2 ND) <input checked="" type="checkbox"/> Pre-shipment <input type="checkbox"/> ON-LINE <input type="checkbox"/> IN PROCESS <input type="checkbox"/> FULL	<h1 style="margin: 0;">Pending</h1>
--	-------------------------------------

Summary Section	Service Number: F-QC20240318	
	Product Name	Textile Accessories
	Item number	Please refer quantity chart
	P/O number	---
	Quantity	2358pcs
	Client name	---
	Supplier name	---
	Inspection date	2024-03-19
	Inspection location	Changshu city, Jiangsu, China

Category	Conform		Comment
1. Quantity	<input type="checkbox"/> YES	<input checked="" type="checkbox"/> NO	Special Attention 2
2. Product description / style / color	<input checked="" type="checkbox"/> YES	<input type="checkbox"/> NO	Special Attention 1
3. Workmanship	<input checked="" type="checkbox"/> YES	<input type="checkbox"/> NO	
4. Testing/ checking	<input checked="" type="checkbox"/> YES	<input type="checkbox"/> NO	
5. Data measurement	<input checked="" type="checkbox"/> YES	<input type="checkbox"/> NO	
6. Packaging	<input type="checkbox"/> YES	<input checked="" type="checkbox"/> NO	Special Attention 2
7. Marking	<input type="checkbox"/> YES	<input checked="" type="checkbox"/> NO	Special Attention 2

OVERALL SUGGESTION	Pending
	Pending client review and approval

Special Attention	
1> No approval samples for reference during inspection on-site. 2> The product size data please refer to the below size record for detail. 3> All products were not packed into carton.	
Defective products	<input checked="" type="checkbox"/> pick out <input type="checkbox"/> replace <input type="checkbox"/> rework

DETAILS

Quantity

Item	Ordered quantity	Total carton	Packed Quantity	Finished quantity	Sample Qty.	DEFECTS			Comment
						Cri	Maj	Min	
The inspection quantity for each item is according to the inspection level II.					AQL	0.0	2.5	4.0	
					Ac	0	7	10	
Total	2358	-	2358	2358	125	0	0	0	Within AQL
NS-001	540	-	540	540	29	0	0	0	
NS-003	360	-	360	360	19	0	0	0	
NS-007	216	-	216	216	11	0	0	0	
NS-016	580	-	580	580	31	0	0	0	
NS-017	310	-	310	310	16	0	0	0	
NS-025	224	-	224	224	12	0	0	0	
NS-026	128	-	128	128	7	0	0	0	

Inspection Standard: ANSI/ASQZ1.4 (MIL-STD-105E)				DEFECTS		
Inspection Level: sample size has been determined				Critical	Major	Minor
Sampling plan: Single, Normal		AQL		0.0	2.5	4.0
Ordered Qty	Sample Size:	Max. Allowed:	0	7	10	
2358	125	Defects Found:	0	0	0	

Defects Found				
Defectives Description		CRI	MAJ	MIN
1.	No defects found	0	0	0

List of test data





Item	Product size(cm)	Product weight(g)
NS-001(Roll 25x500 cm-25 um)	Width:25cm	84g/Roll
NS-003(Roll 25x2000 cm-25 um)	Width:25cm	233g/Roll
NS-007(Roll 25x500 cm-40GSM)	Width:25cm	70g/Roll
NS-016(Pack8-Self-Adhesive)	21x30cm	11.5g/pc
NS-017(Pack 16 - Self-Adhesive)	21x30cm	11.5g/pc
NS-025(Embroidery Thread set - 22 spools (500 m))	2.5*7cm	20g/pc
NS-026(Embroidery Thread Set-44 spools (500 m))	2.5*7cm	20g/pc

TESTING /CHECKING

Inspection Standard: ANSI/ASQZ1.4 (MIL-STD-105E)					DEFECTS		
					Critical	Major	Minor
Sampling plan: Single, Normal				AQL	0	0.65	1.5
Inspection Level:	S-2	Sample Size:	8	Max. Allowed:	0	0	0
Inspection Level:	S-4	Sample Size:	13	Max. Allowed:	0	0	1

TESTING/CHECKING							
NO	Test item	Insp Level	Sample	CRI	MAJ	MIN	Conclusion
1.	Color check	S-4	13	0	0	0	PASS
2.	Function test	S-2	5	0	0	0	PASS
3.	Smell test	S-2	5				

Product photos

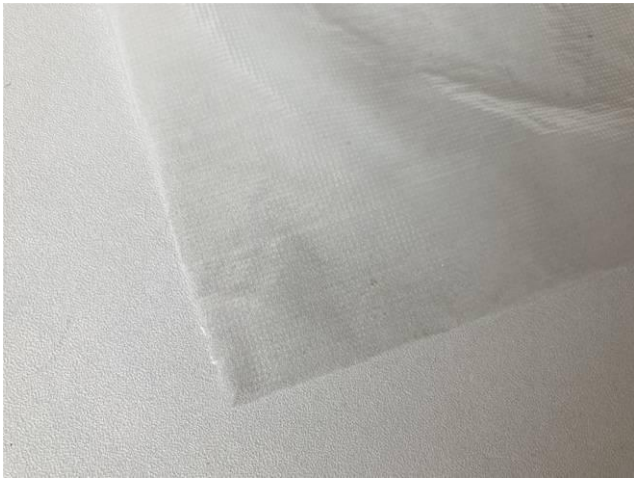
1	Photos of NS-001
	
NS-001	NS-001
	
NS-001	NS-001



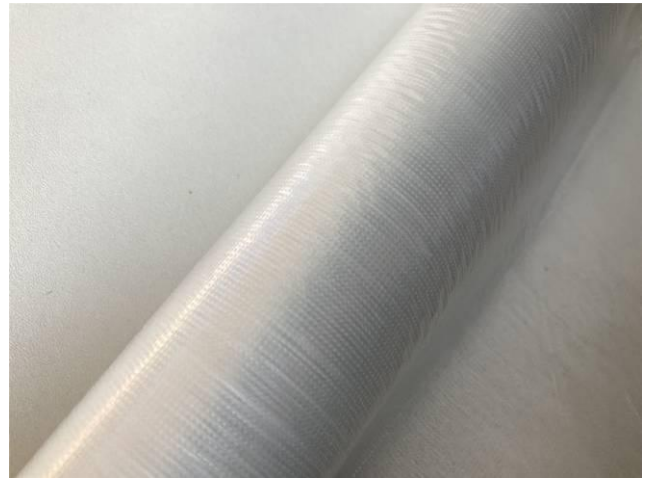
NS-001



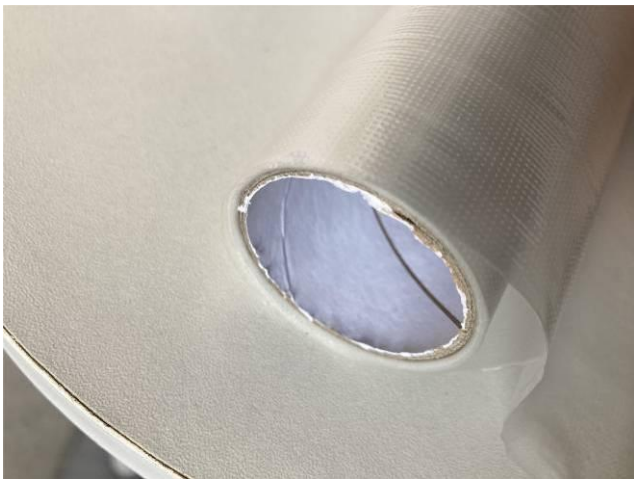
NS-001



NS-001



NS-001



NS-001



NS-001

Photos of NS-003

2



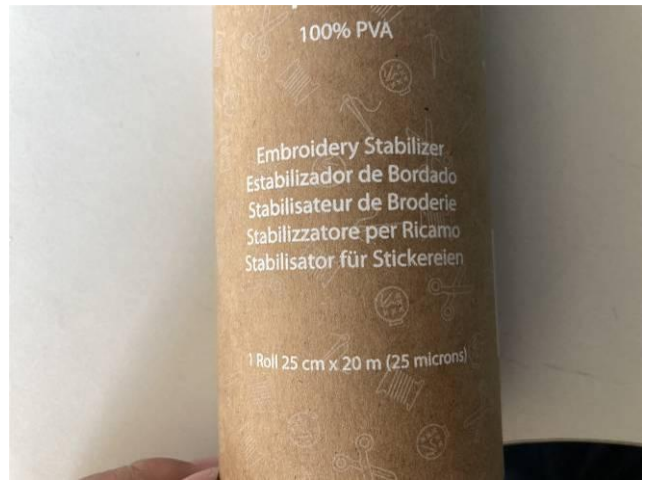
NS-003



NS-003



NS-003



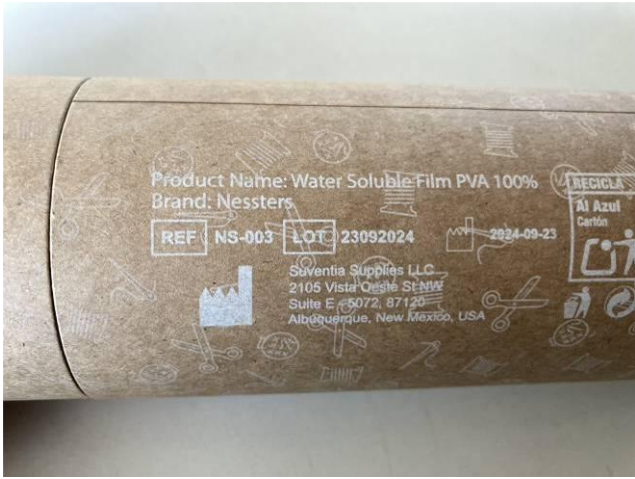
NS-003



NS-003



NS-003



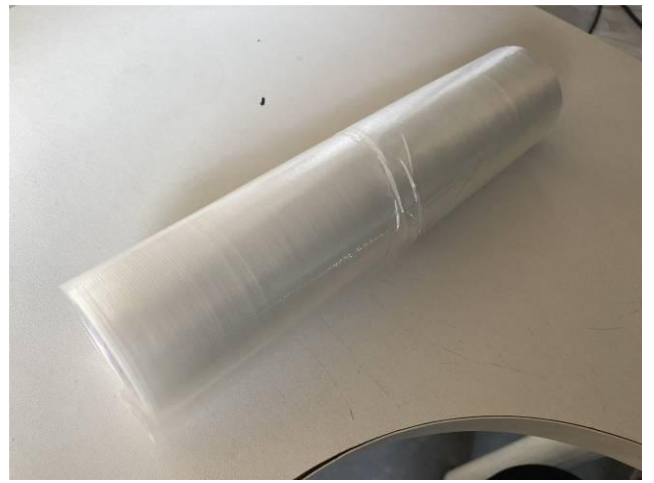
NS-003



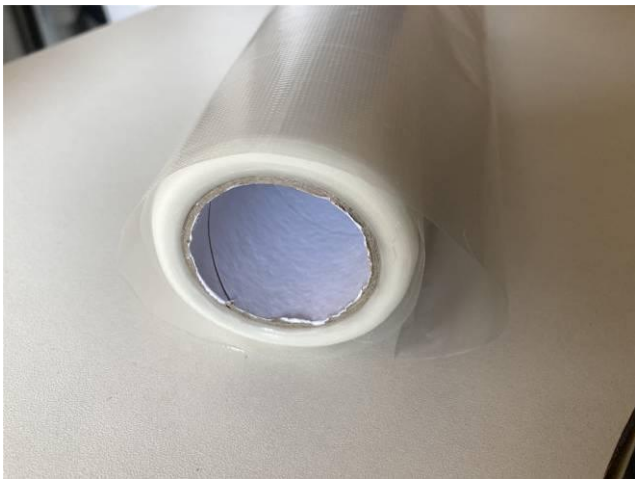
NS-003



NS-003



NS-003



NS-003



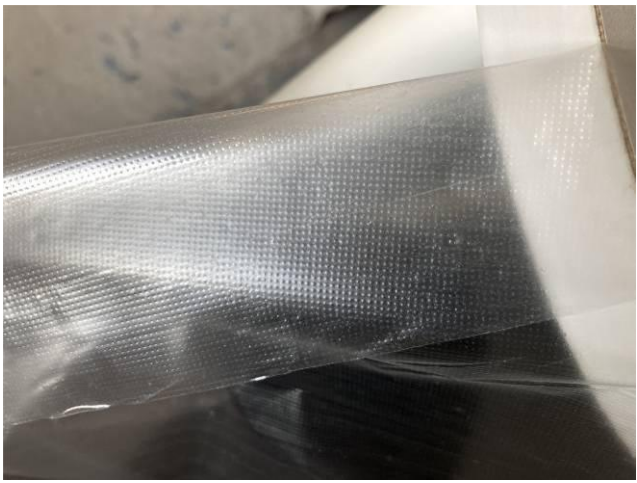
NS-003



NS-003



NS-003



NS-003



NS-003



NS-003



NS-003

3

Photos of NS-007



NS-007



NS-007



NS-007



NS-007



NS-007



NS-007



NS-007



NS-007



NS-007



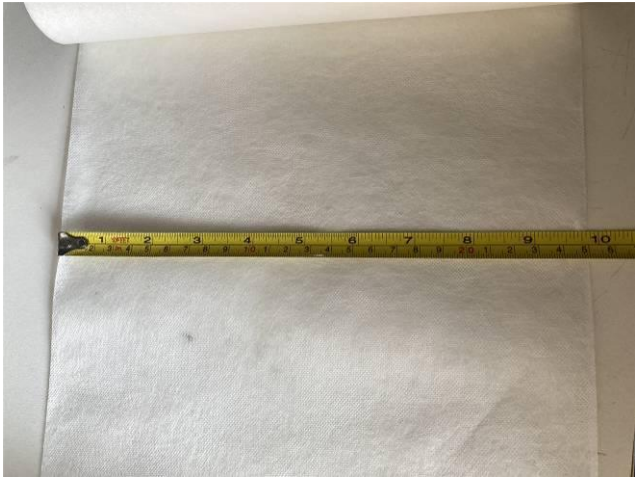
NS-007



NS-007



NS-007



NS-007



NS-007



NS-007

N/A

4

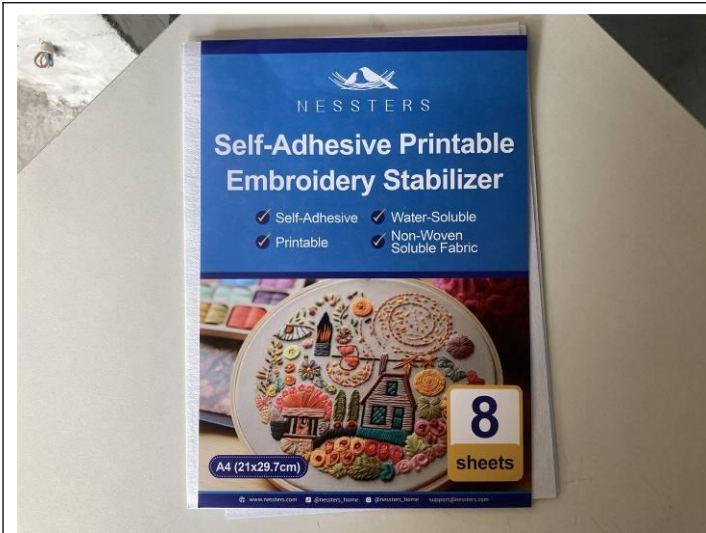
Photos of NS-016



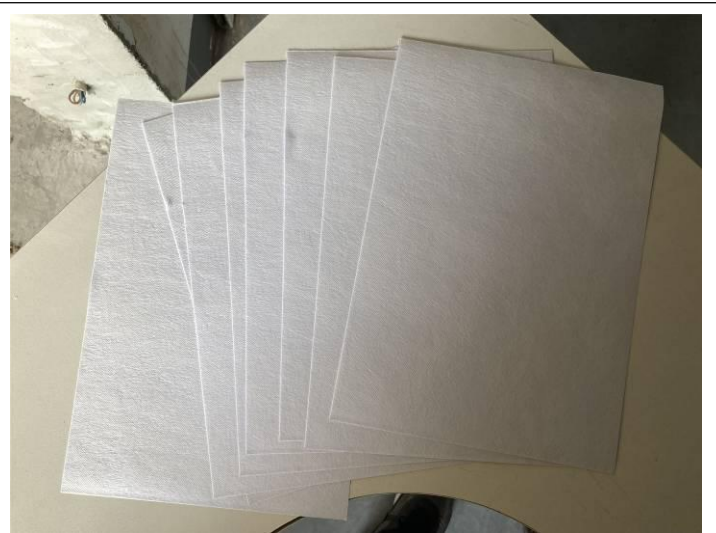
NS-016



NS-016



NS-016

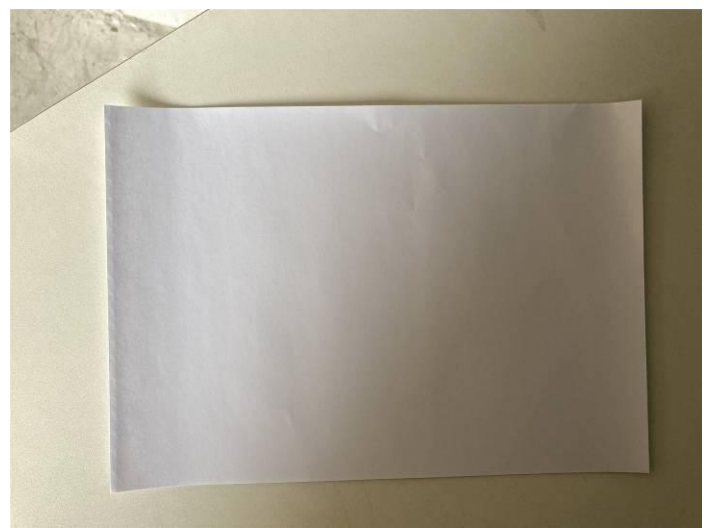


NS-016



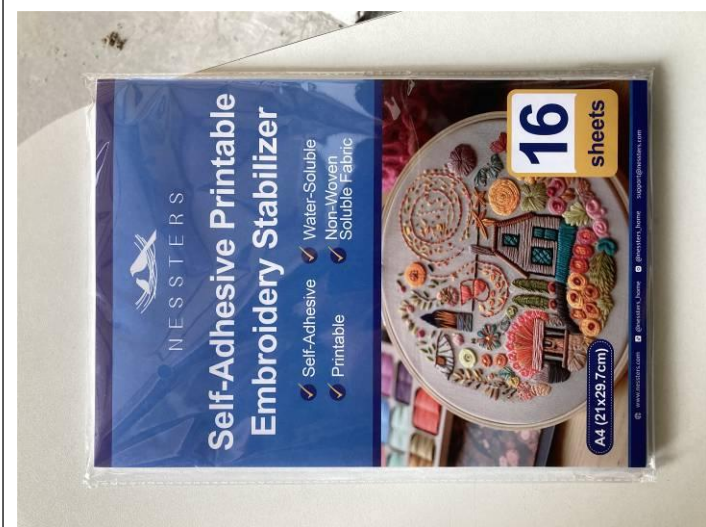
NS-016

5



NS-016

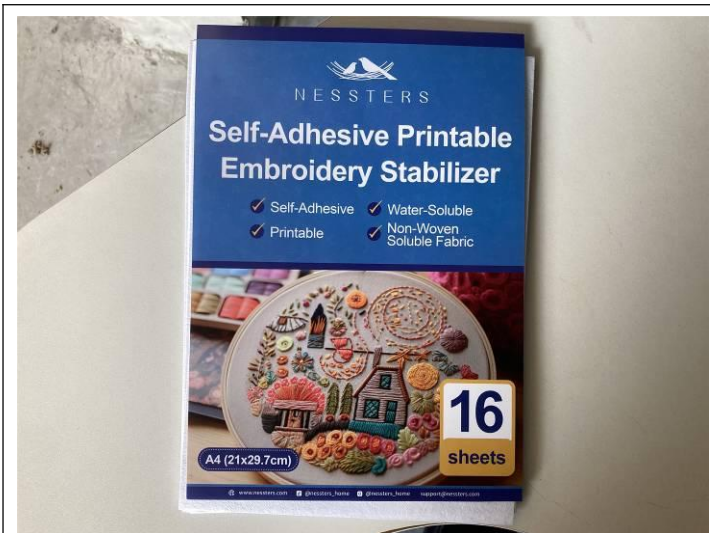
Photos of NS-017



NS-017



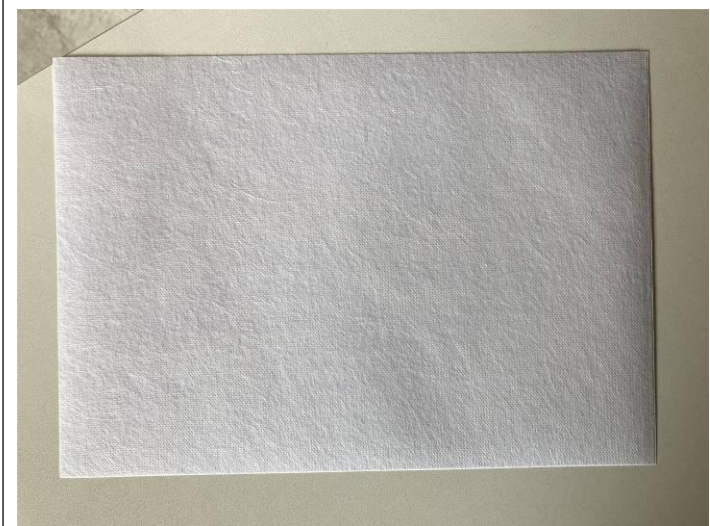
NS-017



NS-017



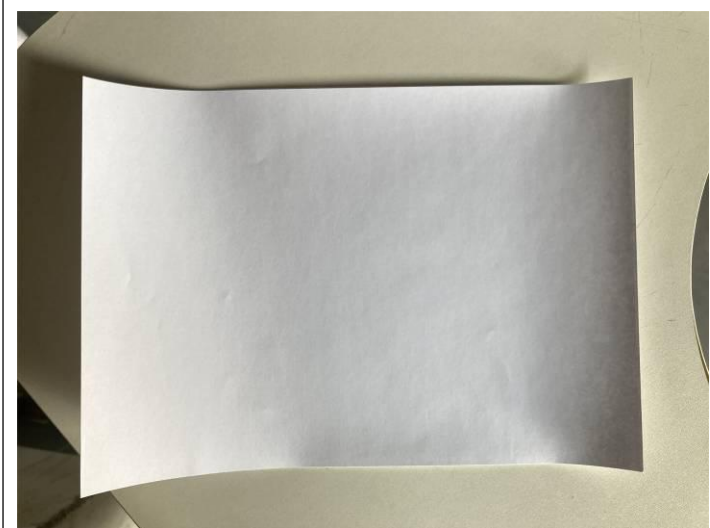
NS-017



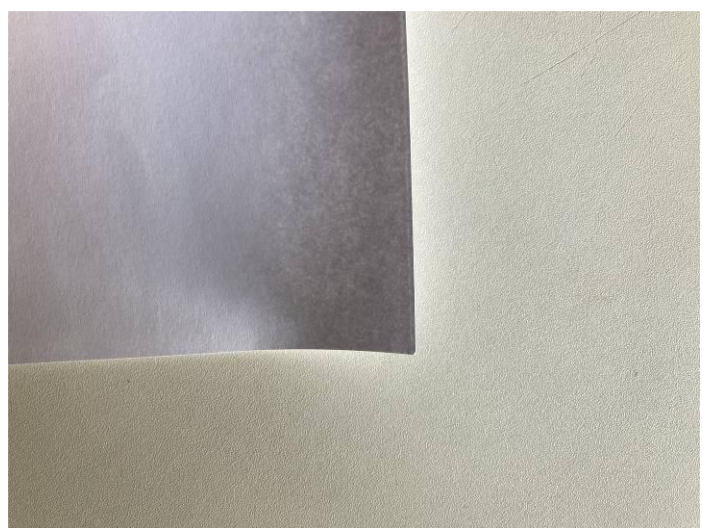
NS-017



NS-017



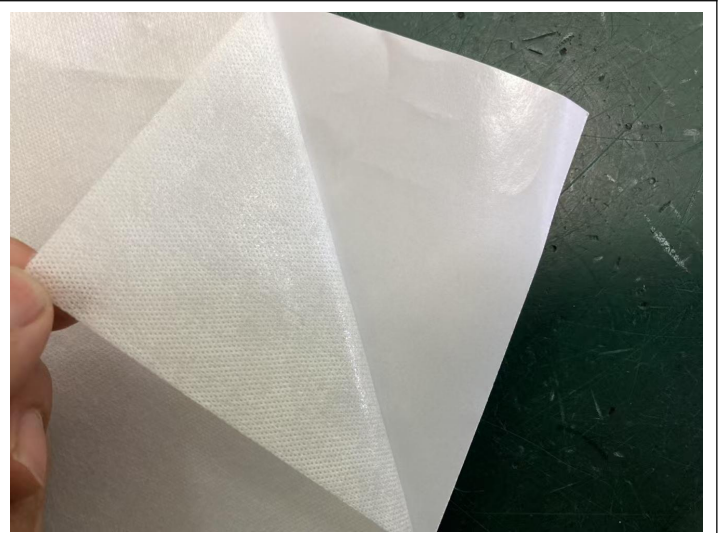
NS-017



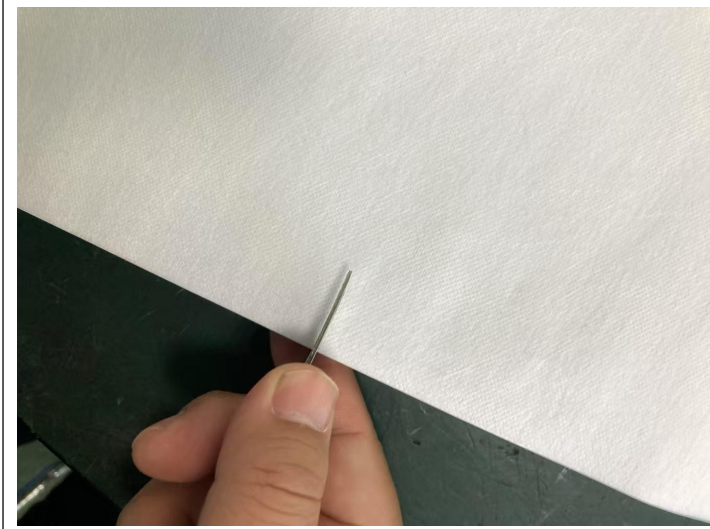
NS-017



NS-017



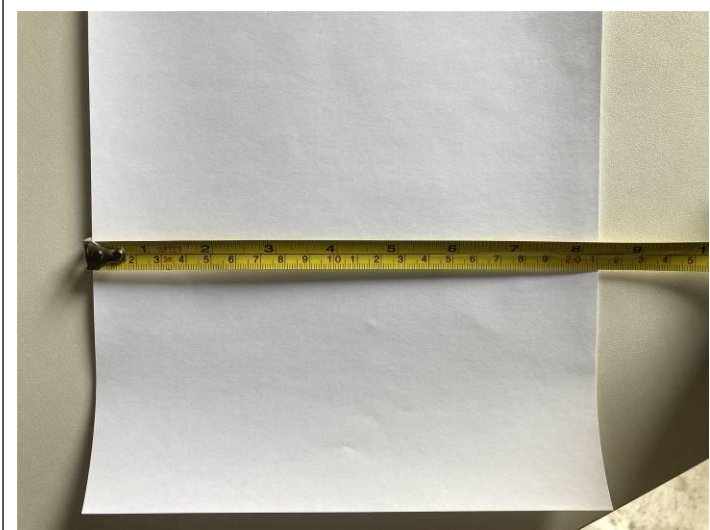
NS-017



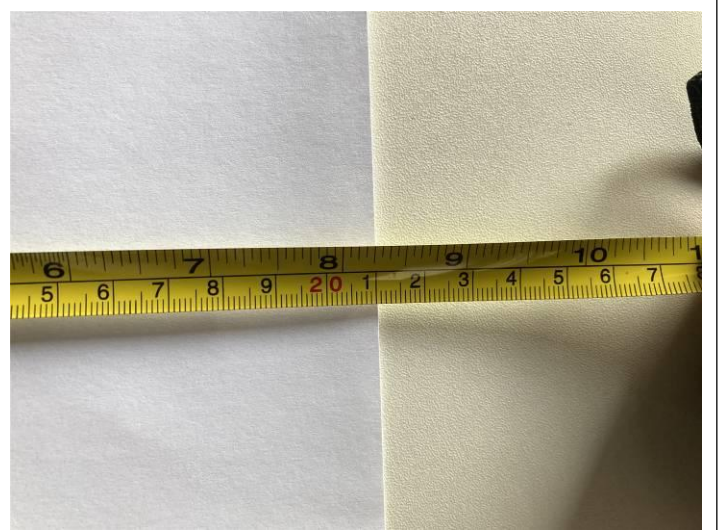
NS-017



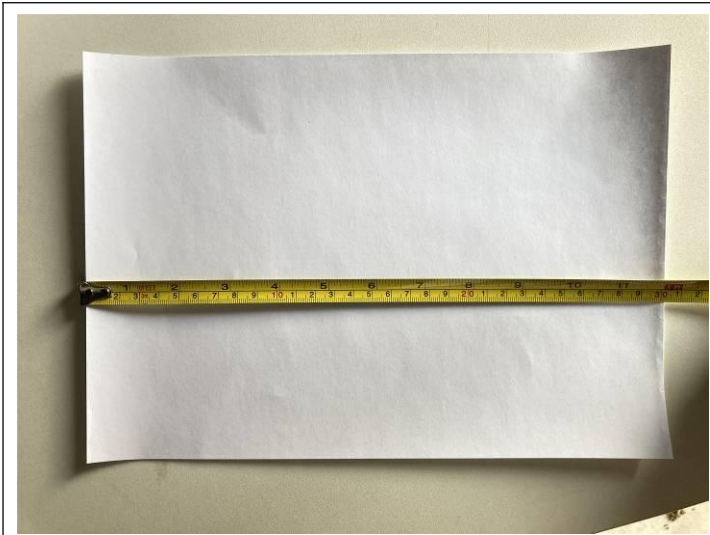
NS-017



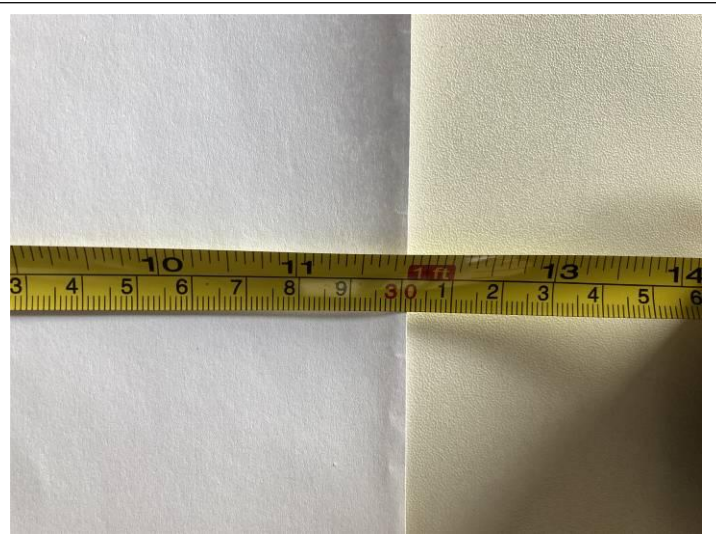
NS-017



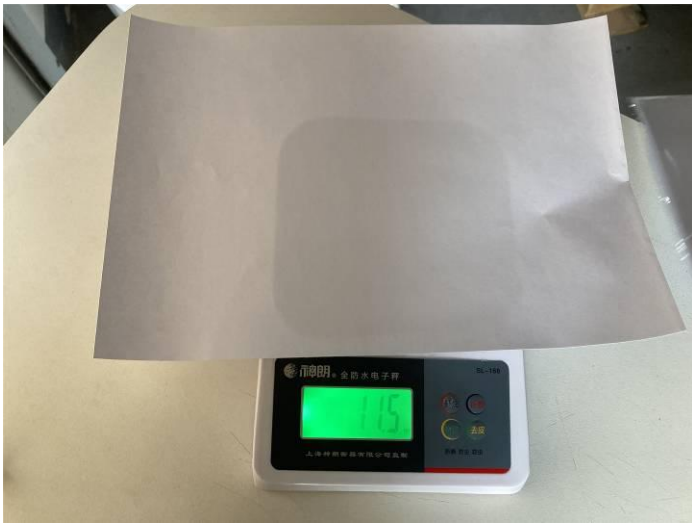
NS-017



NS-017

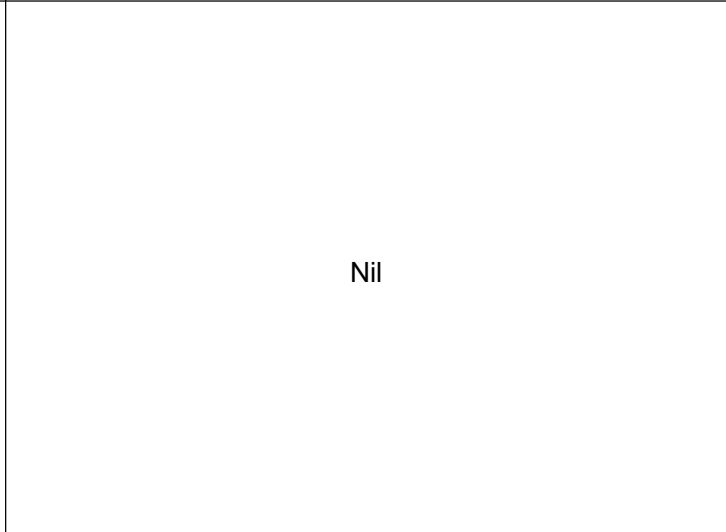


NS-017



NS-017

6



Nil

Nil

Photos of NS-025



NS-025



NS-025



NS-025



NS-025



NS-025



NS-025



NS-025



NS-025



NS-025



NS-025



NS-025



NS-025



NS-025



NS-025



NS-025



NS-025



NS-025



NS-025



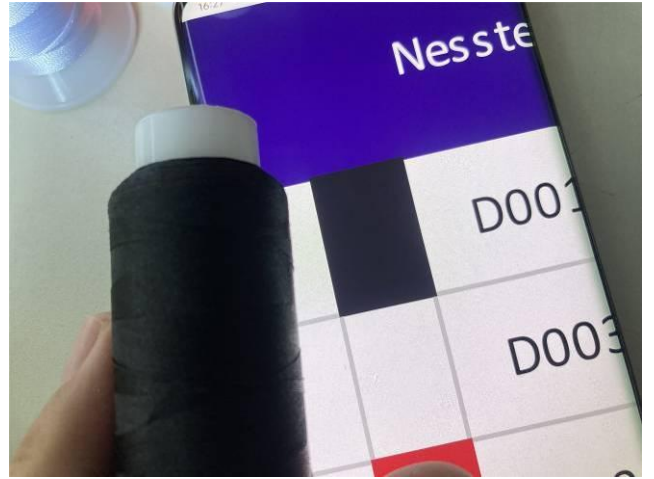
NS-025



NS-025



NS-025



NS-025



NS-025



NS-025



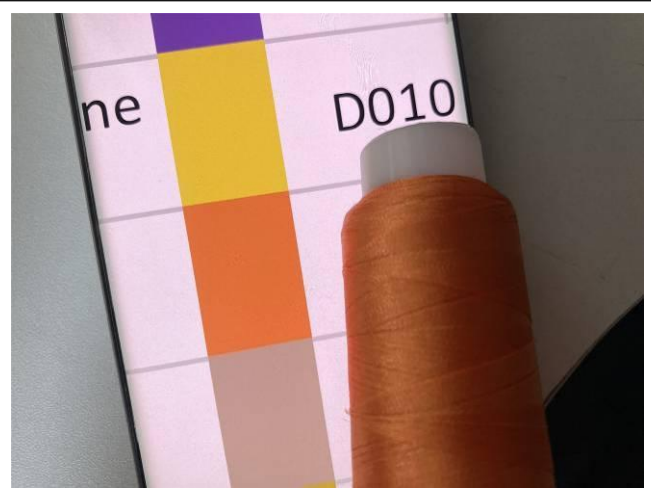
NS-025



NS-025



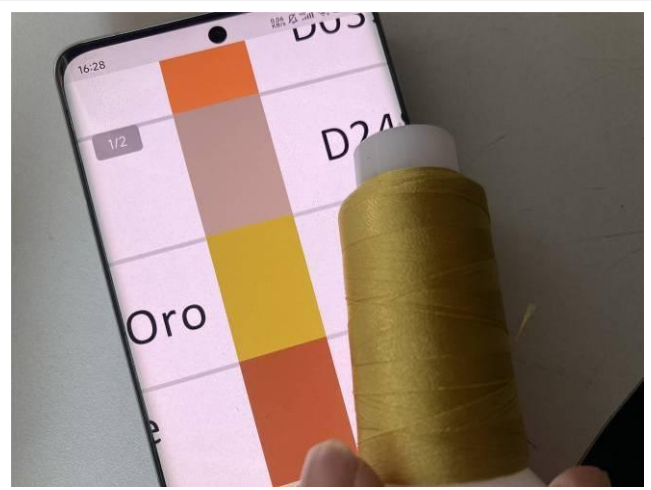
NS-025



NS-025



NS-025



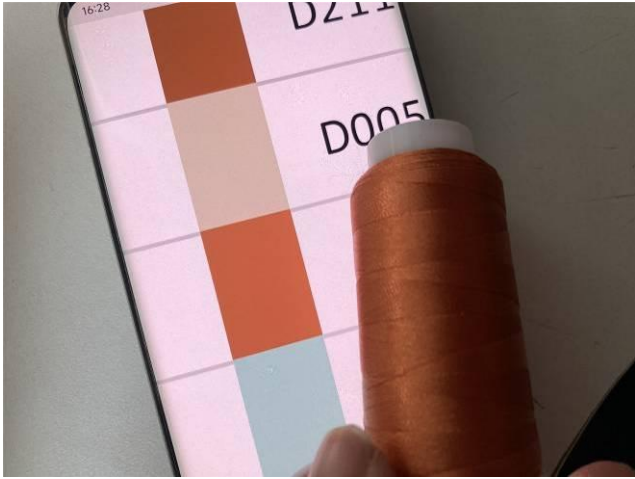
NS-025



NS-025



NS-025



NS-025



NS-025



NS-025



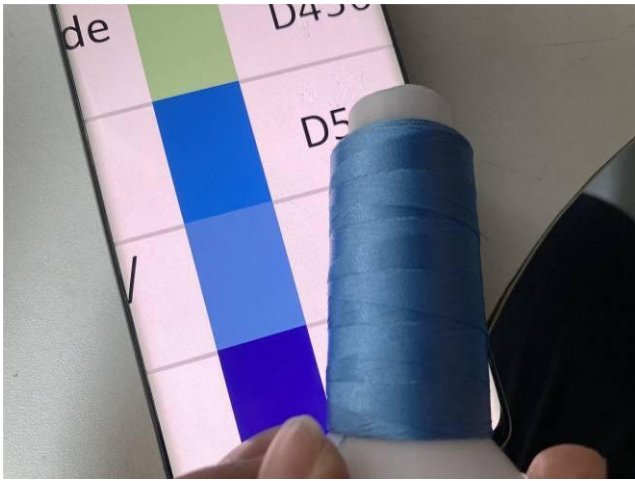
NS-025



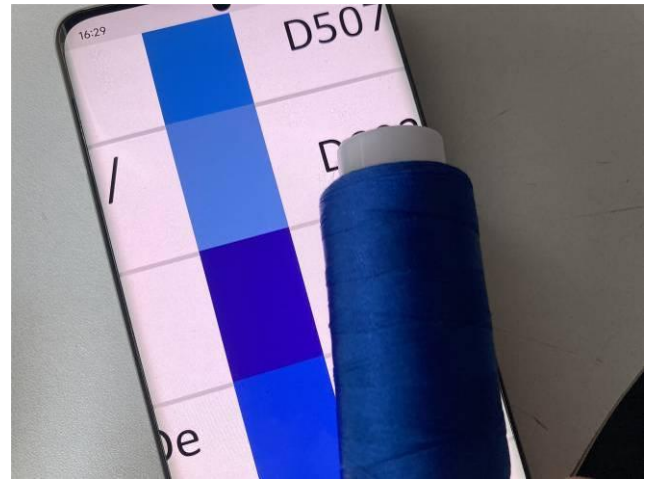
NS-025



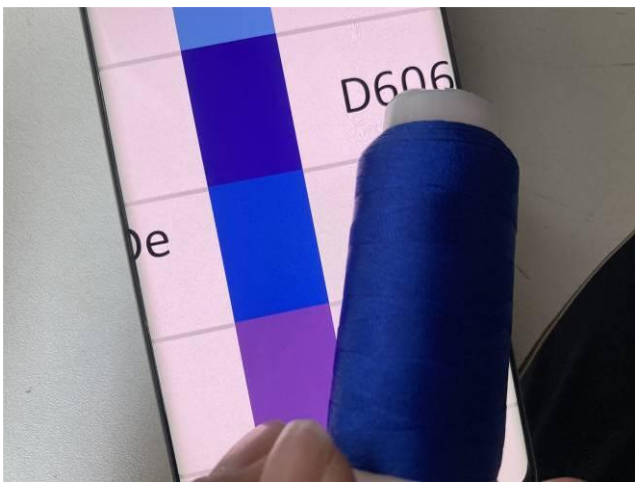
NS-025



NS-025



NS-025



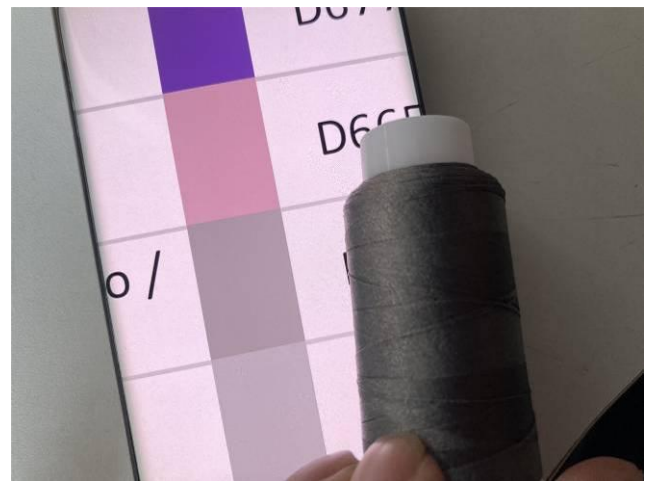
NS-025



NS-025



NS-025



NS-025



NS-025



NS-025



NS-025



NS-025



NS-025



NS-025



NS-025



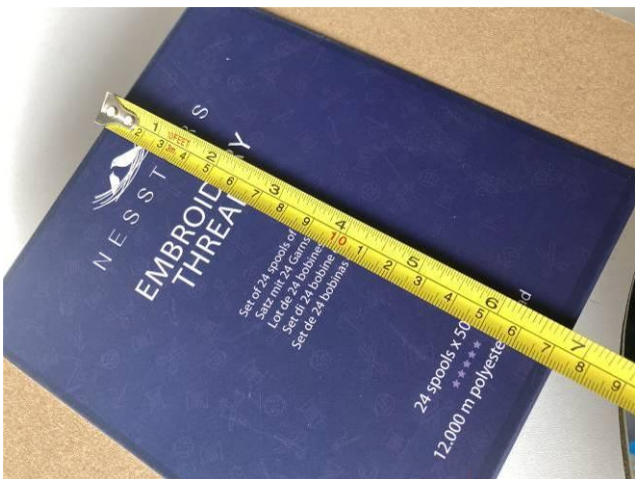
NS-025



NS-025



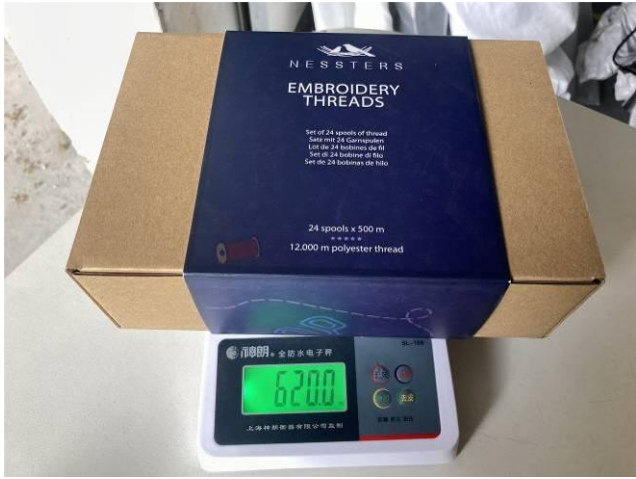
NS-025



NS-025



NS-025



NS-025

7

Nil

Nil

Photos of NS-026



NS-026



NS-026



NS-026



NS-026



NS-026



NS-026



NS-026



NS-026



NS-026



NS-026



NS-026



NS-026



NS-026



NS-026



NS-026



NS-026



NS-026



NS-026



NS-026



NS-026



NS-026



NS-026



NS-026



NS-026



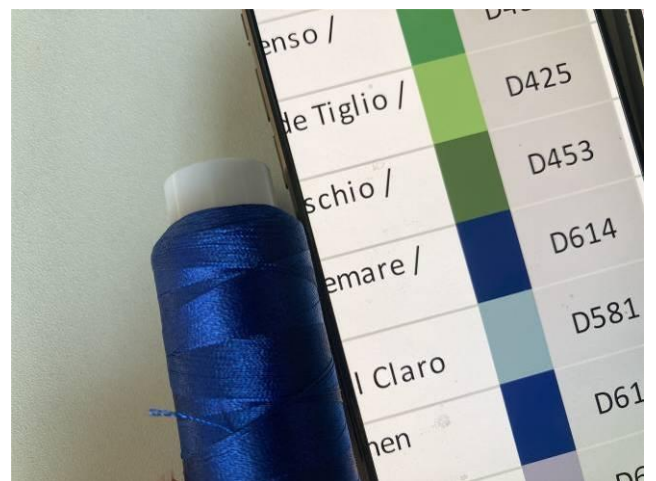
NS-026



NS-026



NS-026



NS-026



NS-026



NS-026



NS-026



NS-026



NS-026



NS-026



Warehouse



Warehouse



Warehouse



Warehouse



Warehouse



Warehouse



Warehouse



Warehouse



Warehouse



Warehouse



Warehouse



Warehouse

	<p style="text-align: center;">Nil</p>
<p style="text-align: center;">Warehouse</p>	<p style="text-align: center;">Nil</p>

Note: This report reflects our findings at time and place of inspection.

This report does not relieve suppliers from their contractual liabilities or prejudice buyers' right for compensation for any apparent and/or hidden defects not detected during our random inspection or occurring thereafter.

-----END OF REPORT-----